



---

# CHURCH HOUSE

---

■ BREATHING NEW LIFE INTO THE PROPERTY WHILE REMAINING SYMPATHETIC TO ITS HISTORY, BEAUTY AND CHARACTER.

When builder, Glen Williams, first saw the heritage-listed Anglican Church of Transfiguration in Norman Park, Brisbane, he was determined to purchase it, save it from slow neglect — and call it home.

The project went on to be a finalist in the 2016 Fenestration Design Awards for Best use of Windows & Doors Residential New Construction over \$500,000, but resurrecting the church into one of Norman Park's most prestigious homes was not without its challenges.

The construction and design team's highest priority was to retain the original condition and character of

the building while integrating it with a stunning new residence.

From the very early stages of the project, it was clear that a key ingredient in the success of the integrated design was the extensive use of windows and doors. Expert advice was required, and Bretts Architectural Window Solutions was asked to visit the site to reassure the builder that his vision was attainable in terms of manufacture and supply.

AWVS products were chosen due to their ability to cope with the sheer magnitude of openings, and to suit

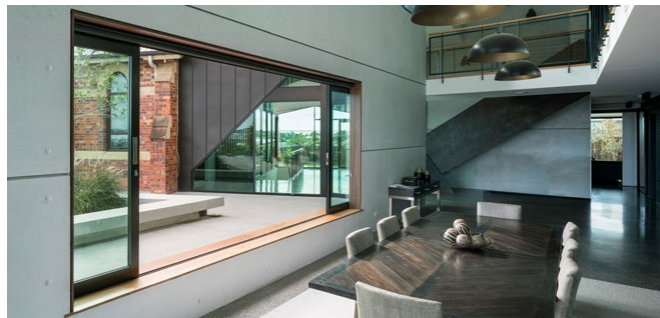
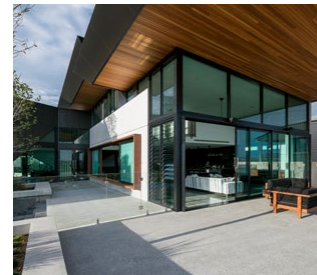
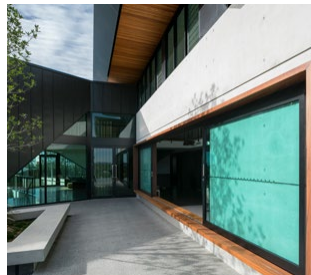
the bold and industrial look of the home. Gorgeous expanses of raking windows now stand at both the front and rear of the entry foyer, along with full-height glazing and oversized sliding doors.

A feature sliding window in the dining room with disappearing panels allows for optimum views and ventilation and adds to the open and airy feel of the new home. Installed into large exposed concrete panels, the windows were given special treatment with custom black chunky commercial frames, softened with timber surrounds and lined roof overhangs.

The use of Elevate™ multi-stacking doors recessed into a channel and grate system have enabled level entry at one end of the house and, when fully open, the cooling breezes and amazing views are well worth the investment.

The old church itself is connected to the residence by an artery of glass, and has been transformed into a large games room.

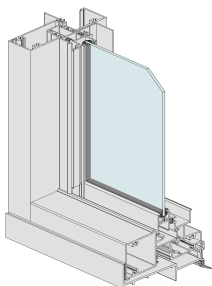
The success of the project is a testament to the team's abiding commitment to breathing new life into the property while remaining sympathetic to its history, beauty and character.



For more information and the full gallery, visit:  
[elevatealuminium.com.au](http://elevatealuminium.com.au)

Architect: David Hansford. DAH Architecture. Builder: Glen Williams Construction.  
Photography courtesy of Bretts Architectural Window Solutions

## ■ ELEVATE™ SERIES 452 COMMERCIAL SLIDING WINDOW



- × Series 452 Sliding windows incorporate 17mm thick sliding window sashes fitted into CentreGLAZE™ framing using a custom head and sill and an inlay adapter.
- × This sliding window features a double sash design with the external sash fixed.
- × Both fixed and opening sashes can be installed, replaced and/or reglazed from inside the building. This could be an important feature in elevated situations.
- × There is a large variety of sliding window combinations possible (SF, FS, SFS or FSSF) with and without highlights/lowlights.
- × Sliding sashes can be fitted with a variety of latches and locks including centre multi-point lock.
- × The ventilation lock allows the opening sliding window sash to be key locked in the closed and partly open (ventilation) position.



Bretts Architectural Window Solutions draws on the experience and knowledge built up over almost 100 years to offer customers comprehensive advice on any aluminium window and door combination your project requires. While flexible enough to diversify where necessary, Bretts stick rigidly to values that reflect the importance of tradition, quality and family.

